



# CHARACTERISTICS OF HOMICIDES COMMITTED IN PARIS AND THE INNER SUBURBS

recorded by CORAIL

Mickael SCHERR and Aurélien LANGLADE - ONDRP



In 2006, the Préfecture de Police de Paris (Paris Metropolitan Police Service Headquarters) set up an Operations Cell for Matching and Analysing Associated Offences (CORAIL), for the purposes of detecting serial offences from telegrams, report logbooks or any other operational piece of data forwarded by the Paris region police forces.

On the basis of this information, the National Observatory of Crime and Criminal Justice (ONDRP) compiled a sample of 602 homicides committed across four départements (Paris, Hauts-De-Seine, Seine-Saint-Denis and Val-de-Marne) over a seven-year period (2007 to 2013) with a view to studying their characteristics.

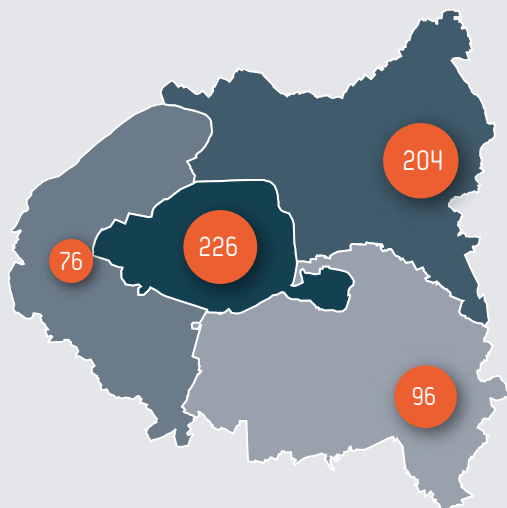
The ONDRP has adopted the same criteria as the United Nations Office on Drugs and Crime (UNODC) to define what constitutes intentional homicide. This definition includes murders, assassinations, infanticides (or more generally murders of minors under 15 years of age) and non-negligent manslaughters through intentional violence, and excludes abortions, negligent homicide and attempted homicides.

This document presents the main findings of this study. In addition to this document, readers are invited to consult the associated "Grand Angle" article for an insight into all of the methodological prerequisites for conducting this study and detailed commentaries on all of the findings.

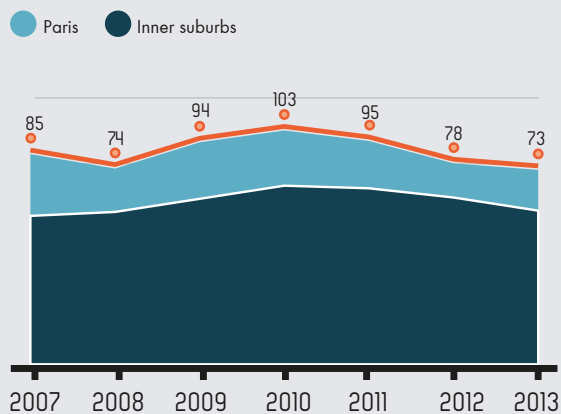
The ONDRP would like to thank the Préfecture de Police, and above all the Paris Regional Criminal Investigation Department (DRPJ) and CORAIL, without which this unprecedented study would not have been possible.

# CONTEXT

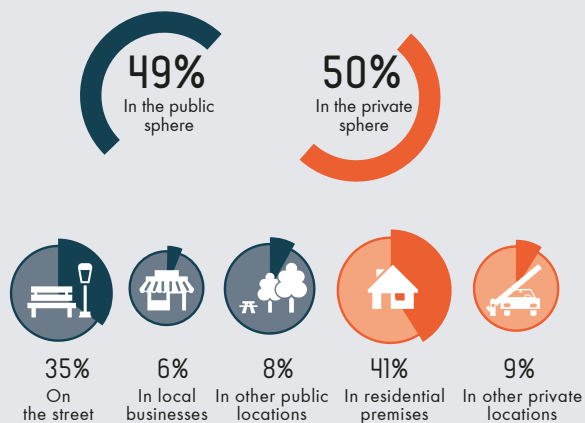
NUMBER OF HOMICIDES PER DÉPARTEMENT (PARIS AND INNER SUBURBS)



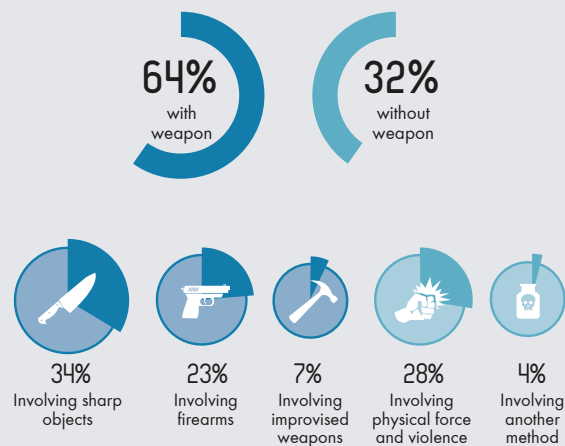
NUMBER OF HOMICIDES PER YEAR (2007 TO 2013)



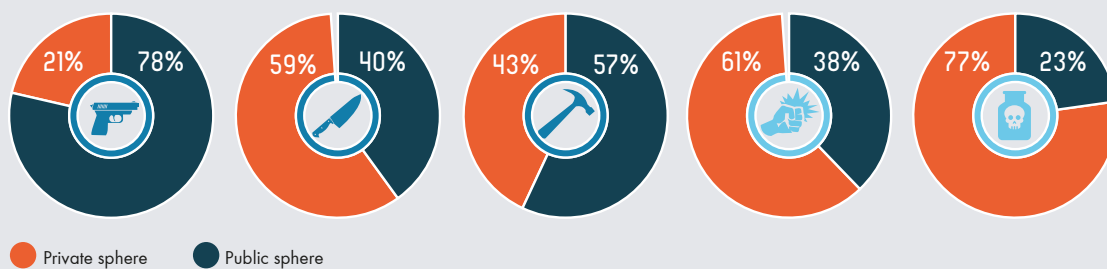
PROPORTION OF HOMICIDES BY LOCATION TYPE



PROPORTION OF HOMICIDES BY METHOD OR WEAPON TYPE

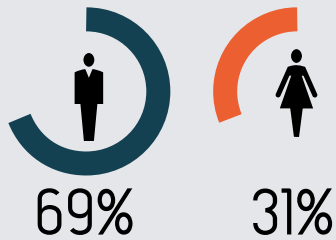


BREAKDOWN OF HOMICIDES BY METHOD OR WEAPON TYPE AND BY LOCATION

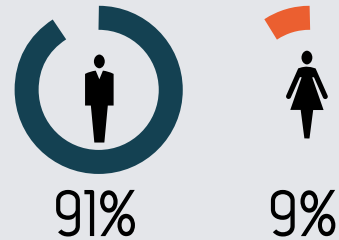


# CHARACTERISTICS

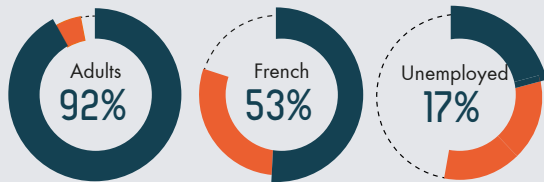
BREAKDOWN OF HOMICIDE VICTIMS BY GENDER



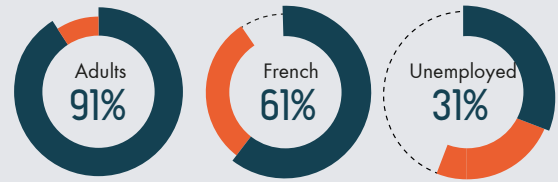
BREAKDOWN OF IMPLICATED PEOPLE BY GENDER



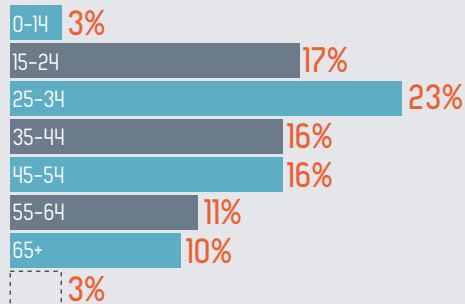
BREAKDOWN OF HOMICIDE VICTIMS ACCORDING TO THE MAIN SOCIODEMOGRAPHIC CHARACTERISTICS



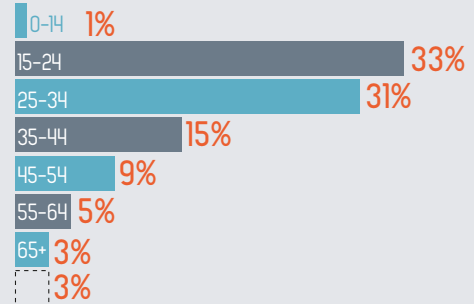
BREAKDOWN OF PEOPLE IMPLICATED IN HOMICIDE ACCORDING TO THE MAIN SOCIODEMOGRAPHIC CHARACTERISTICS



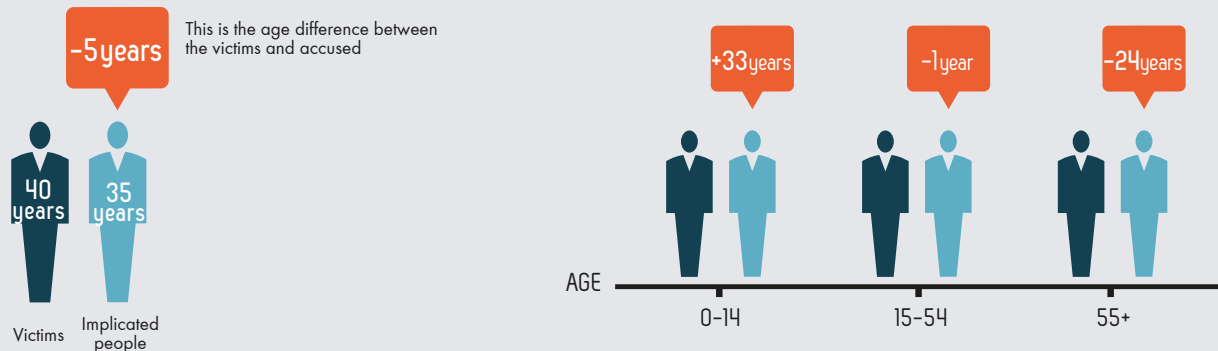
BREAKDOWN OF HOMICIDE VICTIMS BY AGE



BREAKDOWN OF PEOPLE ACCUSED OF IMPLICATED IN HOMICIDE BY AGE

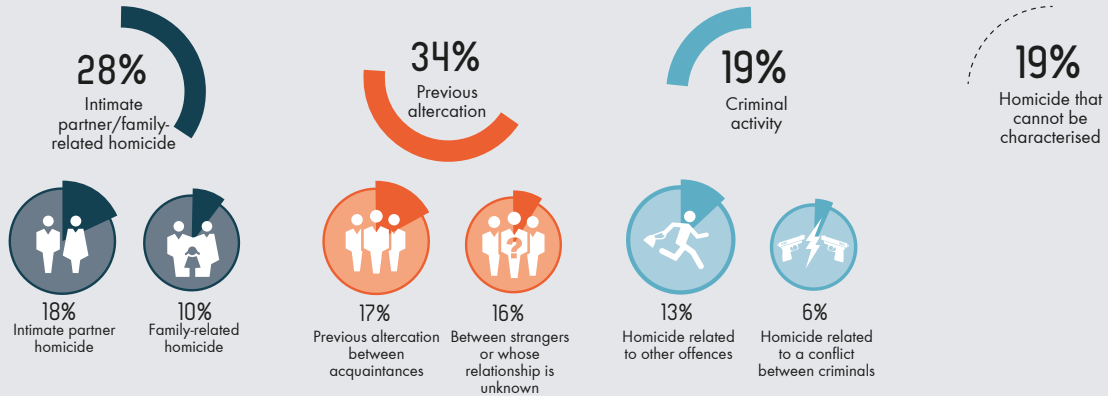


AVERAGE AGE OF PEOPLE IMPLICATED IN HOMICIDE ACCORDING TO VICTIMS' AGE

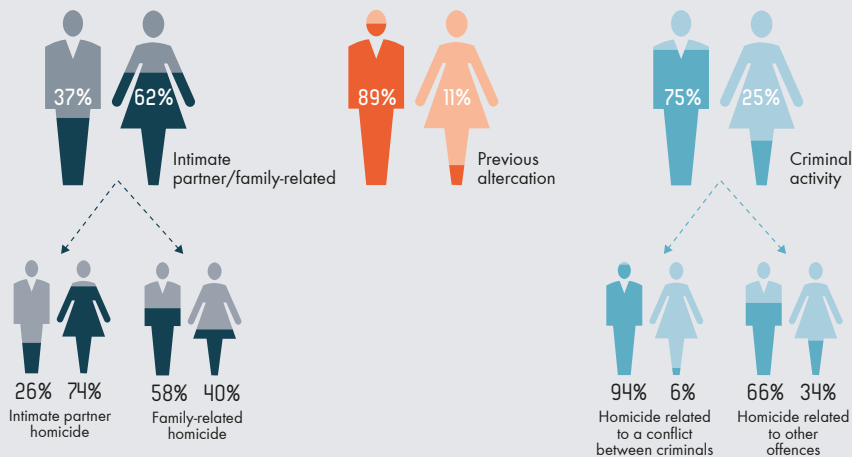


# TYOLOGIES OF HOMICIDE

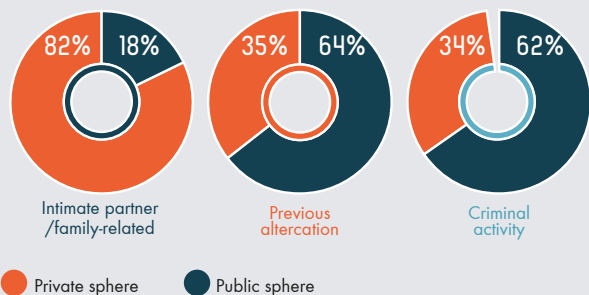
BREAKDOWN OF HOMICIDES ACCORDING TO THE DIFFERENT TYPOLOGIES DETERMINED BY THE ONDRP



BREAKDOWN OF HOMICIDES ACCORDING TO TYPOLOGY AND VICTIMS' GENDER



BREAKDOWN OF HOMICIDES ACCORDING TO TYPOLOGY AND LOCATION TYPE



BREAKDOWN OF HOMICIDES ACCORDING TO TYPOLOGY AND METHOD OR WEAPON TYPE

